

Punch Unit Type 850 (A812)

This parts catalog includes MB No. 1 to 8

Punch Unit Type 850 (A812)

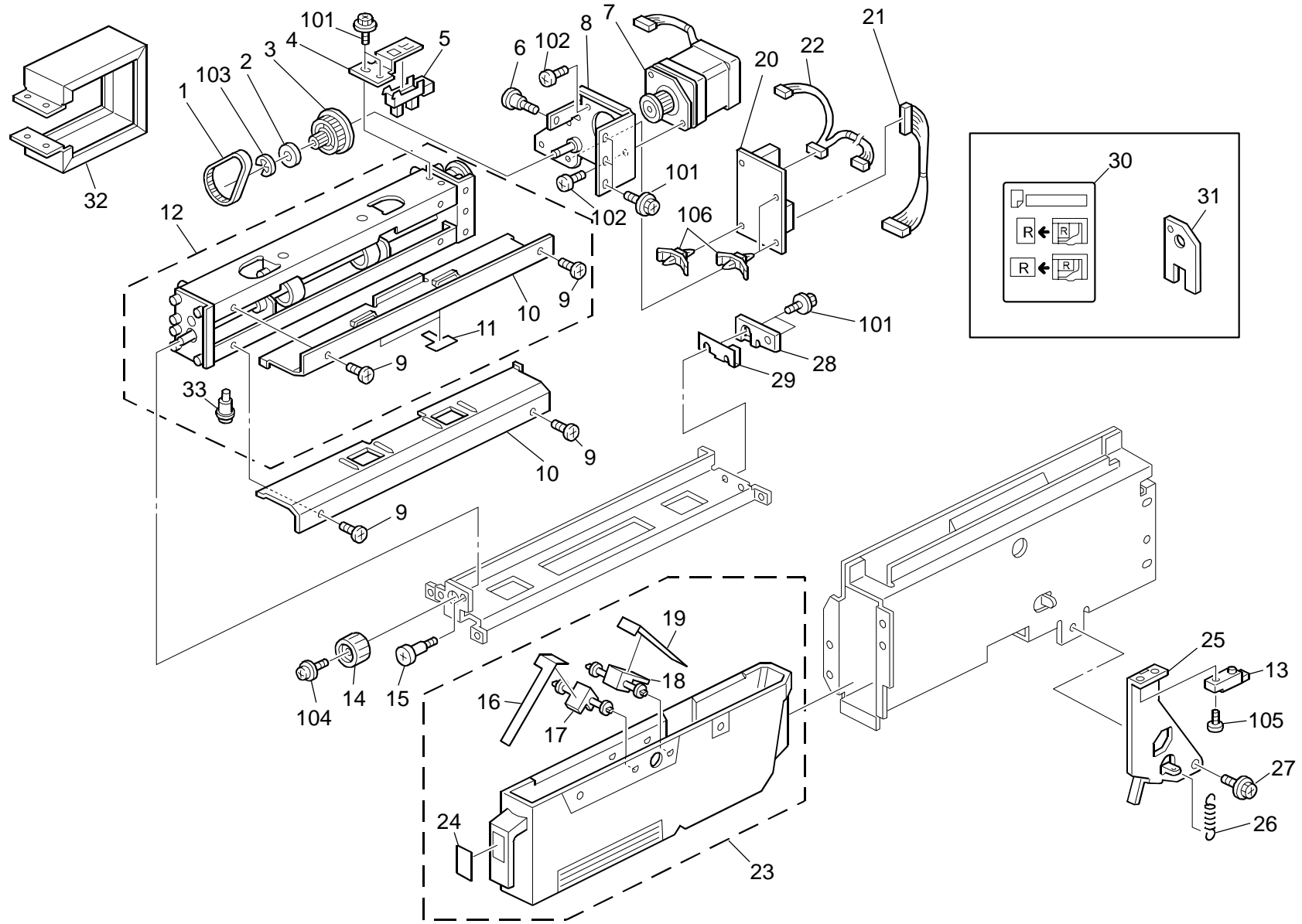
PARTS CATALOG

This catalog gives the numbers and names of parts on this machine.

1.PUNCH UNIT (A812)	2
PARTS INDEX	5

June ,10 ' 2004

1.PUNCH UNIT (A812)



1.PUNCH UNIT (A812)

Index No.	Part No.	Description	Q'ty Per Assembly
1	A812 7126	Timing Belt - 166S2M	1
2	A812 7124	Positioning Screw	1
3	AB03 3061	Pulley - 50/15Z	1
4	A377 7147	H.P. Sensor Bracket	1
5	AW02 0075	Photointerruptor	1
6	5419 5714	Stepped Screw - M4	1
7	A812 7165	Stepper Motor: - DC6.25W	1
8	A812 7121	Drive Motor Bracket	1
9	5875 2088	Shoulder Screw - M4	4
10	A377 7122	Guide Plate:Punch (2HOLES)	2
10	A606 7122	Guide Plate (3HOLES)	2
10	A812 7516	Punch Guide Plate - 2 Holes Usa	2
10	A812 7531	Punch Guide Plate - 4 Holes	2
10	A812 7541	Punch Guide Plate - 4 Hole N Europe	2
11	A812 7141	Guide Mylar (-31/-32/-57/-67)	1
11	A812 7145	Film:guide:punch (-30)	2
12	A812 7182	Punch Unit:2 Holes Ass'y (EU)	1
	A812 7172	x/o MB7	
	A812 7132	x/o MB4	
	A812 7112	x/o MB2	
12	A812 7187	Punch Unit - 2 Holes USA	1
	A812 7177	x/o MB7	
	A812 7137	x/o MB4	
	A812 7117	x/o MB2	
12	A812 7183	Punch Unit - 3 Holes	1
	A812 7173	x/o MB5	
	A812 7133	x/o MB3	
	A812 7113	x/o MB2	
12	A812 7184	Punch Unit:4Hole:Ass'y	1
	A812 7174	x/o MB7	
	A812 7134	x/o MB4	
	A812 7114	x/o MB2	
12	A812 7186	Punch Unit:4Hole:NE:Ass'y	1
	A812 7176	x/o MB7	
	A812 7156	x/o MB4	

Index No.	Part No.	Description	Q'ty Per Assembly
12	A812 7116	x/o	
13	AW01 0070	Photosensor - PS-R11D1-B	1
14	A377 7161	Punch Knob	1
15	A471 1085	Stepped Screw	1
16	A812 7214	Film - Front	1
17	A812 7212	Pin - Front	1
18	A812 7213	Pin - Rear	1
19	A812 7215	Film - Rear	1
20	A812 5160	PCB:Punch	1
	A812 5150	x/o MB6	
	A812 5120	x/o MB1	
21	A812 5390	Punch Board Harness	1
22	A812 5400	Punch Sensor Harness	1
23	A812 7200	Dust Hopper	1
24	A606 1885	Decal - Hopper	1
25	A812 7323	Dust Hopper Stopper	1
26	A812 7331	Lock Spring	1
27	A697 1125	Stepped Screw - Lever	1
28	A812 7412	Spacer - 1mm	1
29	A812 7411	Spacer - 2mm	1
30	A606 1890	Decal - Punch Position (2 HOLES)	1
30	A606 1895	Decal - Punch Position (3 HOLES)	1
30	A812 7740	Decal - Punch Position -4 Holes	1
31	A377 7165	Punch Lock Bracket	1
32	A812 7131	Bracket:Guard	1
33	A812 9501	Punch Head - 8MM - NA MB8 ADDED	1
33	A812 9502	Punch Head - 6.5MM - EU MB8 ADDED	1
101	0451 4006B	Tapping Screw - 4x6	
102	0313 0040B	Philips Pan Head Screw - M3x4	
103	0720 0060E	Retaining Ring - M6	
104	0951 4006W	Philips Screw With Flat Washer - M4x6	
105	0313 0100B	Philips Pan Head Screw - M3x10	
106	1105 0159	PCB Stud	

Parts Index

Parts Index

Part No.	Description	Page and Index No.
A812 5120	x/o MB1	3 - 20
A812 5150	x/o MB6	3 - 20
A812 5160	PCB:Punch	3 - 20
A812 5390	Punch Board Harness	3 - 21
A812 5400	Punch Sensor Harness	3 - 22
A812 7112	x/o MB2	3 - 12
A812 7113	x/o MB2	3 - 12
A812 7114	x/o MB2	3 - 12
A812 7116	x/o	3 - 12
A812 7117	x/o MB2	3 - 12
A812 7121	Drive Motor Bracket	3 - 8
A812 7124	Positioning Screw	3 - 2
A812 7126	Timing Belt - 166S2M	3 - 1
A812 7131	Bracket:Guard	3 - 32
A812 7132	x/o MB4	3 - 12
A812 7133	x/o MB3	3 - 12
A812 7134	x/o MB4	3 - 12
A812 7137	x/o MB4	3 - 12
A812 7141	Guide Mylar (-31/-32/-57/-67)	3 - 11
A812 7145	Film:guide:punch (-30)	3 - 11
A812 7156	x/o MB4	3 - 12
A812 7165	Stepper Motor: - DC6.25W	3 - 7
A812 7172	x/o MB7	3 - 12
A812 7173	x/o MB5	3 - 12
A812 7174	x/o MB7	3 - 12
A812 7176	x/o MB7	3 - 12
A812 7177	x/o MB7	3 - 12
A812 7182	Punch Unit:2 Holes Ass'y (EU)	3 - 12
A812 7183	Punch Unit - 3 Holes	3 - 12
A812 7184	Punch Unit:4Hole:Ass'y	3 - 12
A812 7186	Punch Unit:4Hole:NE:Ass'y	3 - 12
A812 7187	Punch Unit - 2 Holes USA	3 - 12
A812 7200	Dust Hopper	3 - 23
A812 7212	Pin - Front	3 - 17
A812 7213	Pin - Rear	3 - 18

Part No.	Description	Page and Index No.
A812 7214	Film - Front	3 - 16
A812 7215	Film - Rear	3 - 19
A812 7323	Dust Hopper Stopper	3 - 25
A812 7331	Lock Spring	3 - 26
A812 7411	Spacer - 2mm	3 - 29
A812 7412	Spacer - 1mm	3 - 28
A812 7516	Punch Guide Plate - 2 Holes Usa	3 - 10
A812 7531	Punch Guide Plate - 4 Holes	3 - 10
A812 7541	Punch Guide Plate - 4 Hole N Europe	3 - 10
A812 7740	Decal - Punch Position -4 Holes	3 - 30
A812 9501	Punch Head - 8MM - NA MB8 ADDED	3 - 33
A812 9502	Punch Head - 6.5MM - EU MB8 ADDED	3 - 33

Part No.	Description	Page and Index No.
A377 7122	Guide Plate:Punch (2HOLES)	3 - 10
A377 7147	H.P. Sensor Bracket	3 - 4
A377 7161	Punch Knob	3 - 14
A377 7165	Punch Lock Bracket	3 - 31
A471 1085	Stepped Screw	3 - 15
A606 1885	Decal - Hopper	3 - 24
A606 1890	Decal - Punch Position (2 HOLES)	3 - 30
A606 1895	Decal - Punch Position (3 HOLES)	3 - 30
A606 7122	Guide Plate (3HOLES)	3 - 10
A697 1125	Stepped Screw - Lever	3 - 27

Part No.	Description	Page and Index No.
AB03 3061	Pulley - 50/15Z	3 - 3
AW01 0070	Photosensor - PS-R11D1-B	3 - 13
AW02 0075	Photointerruptor	3 - 5

Part No.	Description	Page and Index No.
0313 0040B	Philips Pan Head Screw - M3x4	3 -102
0313 0100B	Philips Pan Head Screw - M3x10	3 -105
0451 4006B	Tapping Screw - 4x6	3 -101
0720 0060E	Retaining Ring - M6	3 -103
0951 4006W	Philips Screw With Flat Washer - M4x6	3 -104
1105 0159	PCB Stud	3 -106

Part No.	Description	Page and Index No.
5419 5714	Stepped Screw - M4	3 - 6
5875 2088	Shoulder Screw - M4	3 - 9